

# Kelvion



## Gasketed Plate Heat Exchangers: Accessories

# INLINE STRAINER



The Inline Strainer removes particulate from the media passing through the heat exchanger via mechanical straining. The Inline Strainer is installed in the inlet port for the selected media. Use of the Inline Strainer is recommended when particulate concentration and size is such that it would lodge in the plate gaps and cause clogging. The Inline Strainer can also be used when other media filtration is not present or not adequate.

### The Right Design

Each Inline Strainer's hole pattern, material and material thickness is individually designed.

The Inline Strainer will:

- Filter out particulate that would lodge in the plate gaps, but no more. This results in the required filtration without needless pressure drop.

- Provide a design strong enough to withstand the pressure even as the strainer loads with particulate.
- Provide the same corrosion resistance as the heat transfer plate material.

### Quality Installation and Easy Maintenance

- The strainer installs through the loose pressure plate, eliminating the need to unpipe the heat exchanger for strainer maintenance.
- The fixed pressure plate is equipped with a lead-in on the back side. This ensures perfect fit of the strainer to the back of the fixed pressure plate, delivering a complete seal and preventing particulate-laden media from bypassing the strainer.
- Even with the largest size, installation and removal is a one-man job using the installation handle on each strainer.

**Inline Strainer:** Technical data

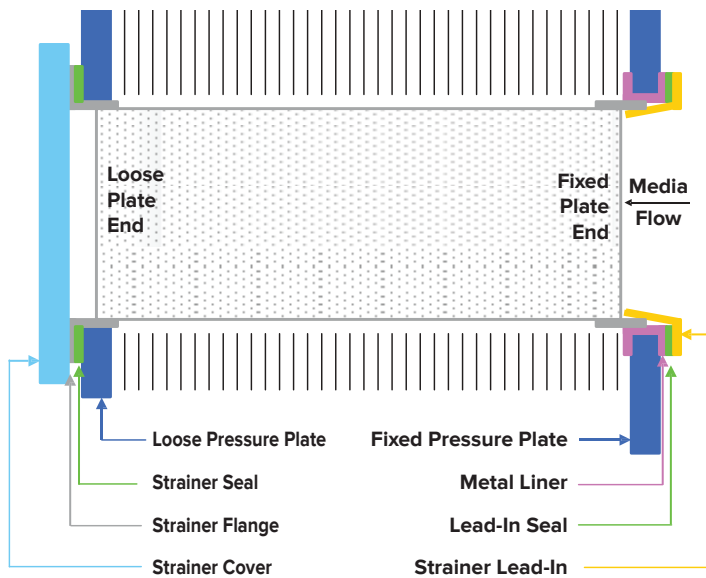
**Inline Strainer Material:** 316 Stainless, 304 Stainless, Titanium.

**Seal Material:** Klinger C4430 as standard, others available on request.

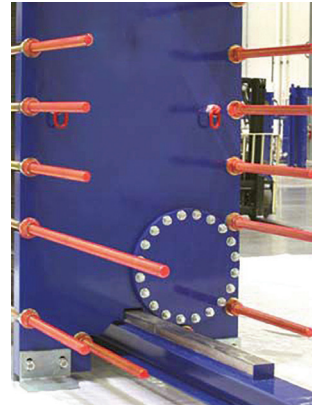
**Hole Pattern:** Designed individually for each application.

**How does it all fit together?**

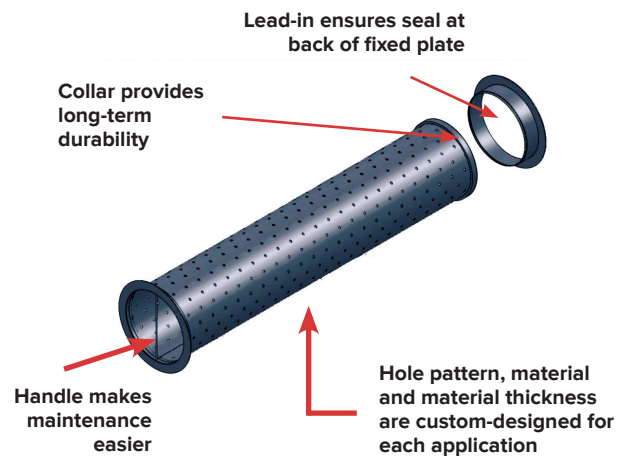
- Example shown is for a GPHE with a metal liner.
- Drawing is not to scale. For concept illustration only.



Installation is simple and quick even on large port sizes.

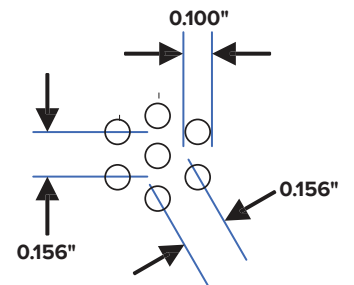


Cover for strainer access located on the Loose Plate.



**Sample hole pattern**

- 0.100" diameter hole
- 0.156" staggered centers



The specifications contained in this printing are intended only to serve the non-binding description of our products and services and are not subject to guarantee. Binding specifications, especially pertaining to performance data and suitability for specific operating purposes, are dependent upon the individual circumstances at the operation location and can, therefore, only be made in terms of precise requests.

**About Kelvion:**

Kelvion provides one of the most extensive product portfolios in the heat exchange market worldwide for a wide range of applications. Kelvion manufactures plate, shell and tube, air-cooled heat exchangers, air filter systems, synthetic fillings for numerous areas of application, wet cooling towers and dry cooling systems, as well as air-conditioning facilities. As a result, Kelvion provides reliable and comprehensive coverage of the entire spectrum for heat exchange.

Kelvion Inc., PHE  
 100 Gea Drive, York, PA 17406  
 Phone: 717-268-6200  
 Fax: 717-268-6162  
 www.kelvion.com/us

