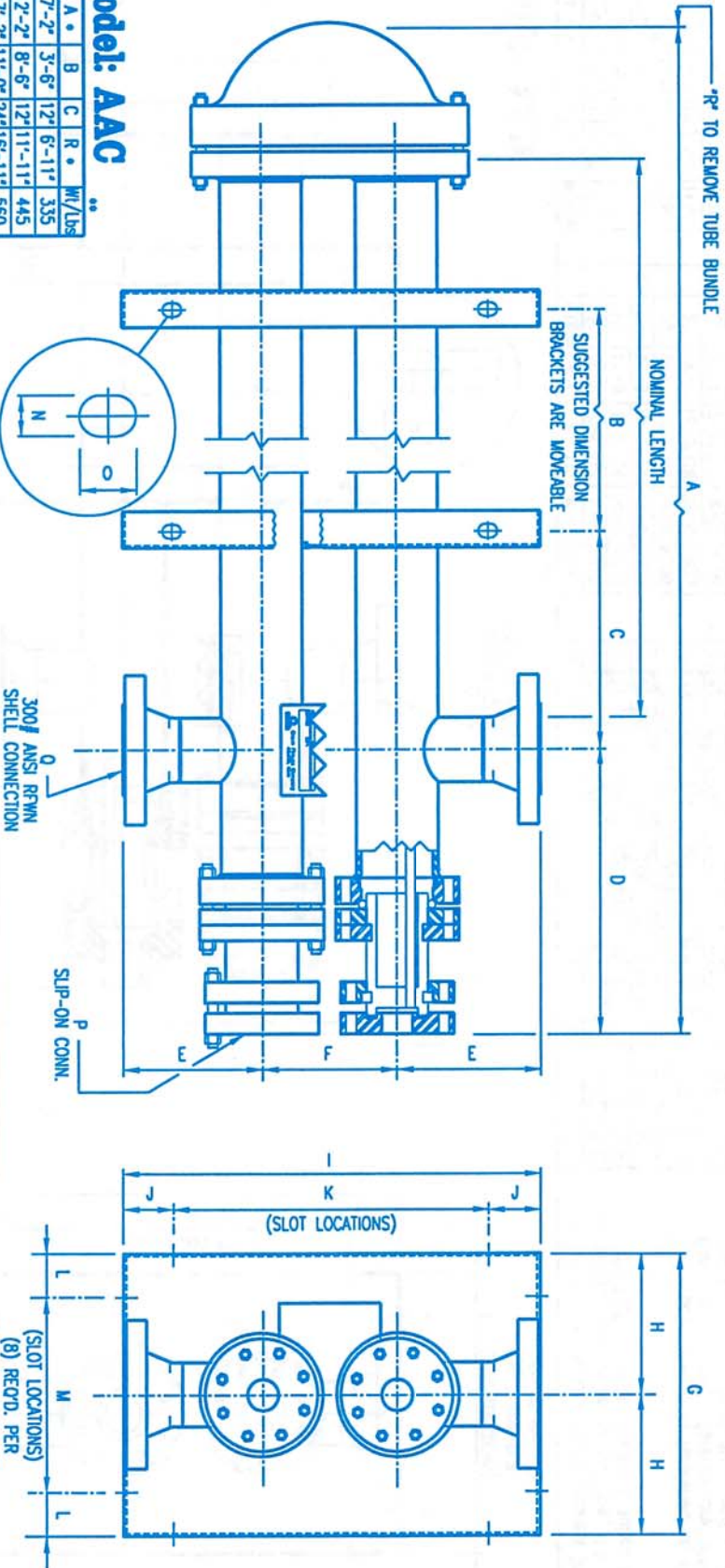




12602 FM 529 • HOUSTON, TEXAS, USA 77041 • PH. NO.: (713) 466-3535 • FAX. NO.: (713) 466-3701

Separated-Head Multitube with Low Pressure Tubeside

Brown Fintube separated heads' unique combination of compression flange with external split flange, to lock the tube bundle in the shell, has made assembly and servicing of Brown Fintube multitube exchangers easy and trouble-free.



Model: AAC

Sz	N	A	B	C	R	Wt/Lbs
5'	7'-2"	3'-6"	12'	6'-11"	335	
10'	12'-2"	8'-6"	12'	11'-11"	445	
15'	17'-2"	11'-0"	24'	16'-11"	560	
20'	22'-2"	14'-0"	36'	21'-11"	670	
25'	27'-2"	19'-6"	36'	26'-11"	785	
5'	7'-4"	3'-8"	12'	7'-1"	480	
10'	12'-4"	8'-8"	12'	12'-1"	645	
15'	17'-4"	11'-0"	24'	17'-1"	845	
20'	22'-4"	14'-0"	36'	22'-1"	1025	
25'	27'-4"	19'-6"	36'	27'-1"	1205	
5'	7'-11"	3'-0"	12'	7'-8"	940	
10'	12'-11"	7'-0"	12'	12'-8"	1270	
15'	17'-11"	10'-6"	24'	17'-8"	1600	
20'	22'-11"	13'-6"	36'	22'-8"	1930	
25'	27'-11"	19'-6"	36'	27'-8"	2265	
5'	8'-3"	2'-6"	12'	8'-0"	1530	
10'	13'-3"	6'-6"	24'	13'-0"	2080	
15'	18'-3"	10'-6"	24'	18'-0"	2635	
20'	23'-3"	13'-0"	36'	23'-0"	3190	
25'	28'-3"	19'-0"	36'	28'-0"	3745	

Sz	N	A	B	C	R	Wt/Lbs
5'	9'-3"	2'-6"	12'	8'-7"	2945	
10'	14'-3"	6'-6"	24'	13'-7"	3770	
15'	19'-3"	10'-0"	24'	18'-7"	4600	
20'	24'-3"	14'-0"	36'	23'-7"	5430	
25'	29'-3"	18'-0"	36'	28'-7"	6255	
5'	9'-5"	2'-6"	12'	8'-8"	3595	
10'	14'-5"	6'-6"	24'	13'-8"	4755	
15'	19'-5"	10'-0"	24'	18'-8"	5915	
20'	24'-5"	14'-0"	36'	23'-8"	7075	
25'	29'-5"	18'-0"	36'	28'-8"	8240	
5'	10'-5"	2'-6"	12'	10'-0"	5905	
10'	15'-5"	6'-6"	24'	15'-0"	7670	
15'	20'-5"	10'-0"	24'	20'-0"	9435	
20'	25'-5"	14'-0"	36'	25'-0"	11200	
25'	30'-5"	18'-0"	36'	30'-0"	12970	

Sz	D	E	F	G	H	I	J
3"	17 3/8"	6 5/8"	6"	13 1/4"	6 5/8"	19 1/4"	3 3/8"
4"	17 1/2"	7 5/8"	7 1/2"	15 1/4"	7 5/8"	22 3/4"	3 3/8"
6"	20 1/2"	9 5/8"	12"	19 1/4"	9 5/8"	31 1/4"	4 5/8"
8"	22"	11 1/2"	13 3/8"	23"	11 1/2"	36 3/8"	6"
10"	25 3/4"	13 1/4"	17 1/2"	26 1/2"	13 1/4"	44"	5"
12"	26 7/8"	15 1/4"	20"	30 1/2"	15 1/4"	50 1/2"	7 1/4"
16"	32 1/2"	17 7/8"	26"	35 3/4"	17 7/8"	61 3/4"	6 7/8"

Sz	K	L	M	N	O	P	Q
3"	12 1/2"	2 5/8"	8"	3/4"	1"	1 1/2"	2"
4"	16"	2 5/8"	10"	3/4"	1"	2"	3"
6"	22"	3 5/8"	12"	3/4"	1"	3"	4"
8"	24 3/8"	5 1/2"	12"	3/4"	1"	4"	6"
10"	34"	3"	20 1/2"	1 1/8"	2"	4"	8"
12"	36"	3 1/4"	24"	1 1/8"	2"	6"	8"
16"	48"	5 7/8"	24"	1 1/8"	2"	8"	10"

* Dimension rounded up to nearest inch
 ** Weights are based on 3/4" dia., 14 gage tubes.
 Add 10% to weight shown if tubes are flined

NOTE:
 This quote sketch is furnished to allow the Customer to begin "preliminary" design on the Customer's foundation and piping drawings.

Weights shown are approximate w/o turbulators, wire wrapped cores, etc.

The information furnished herein is for a STANDARD unit. If your particular order is a custom design, use this bulletin for "approximate dimensions" until a certified drawing is furnished.